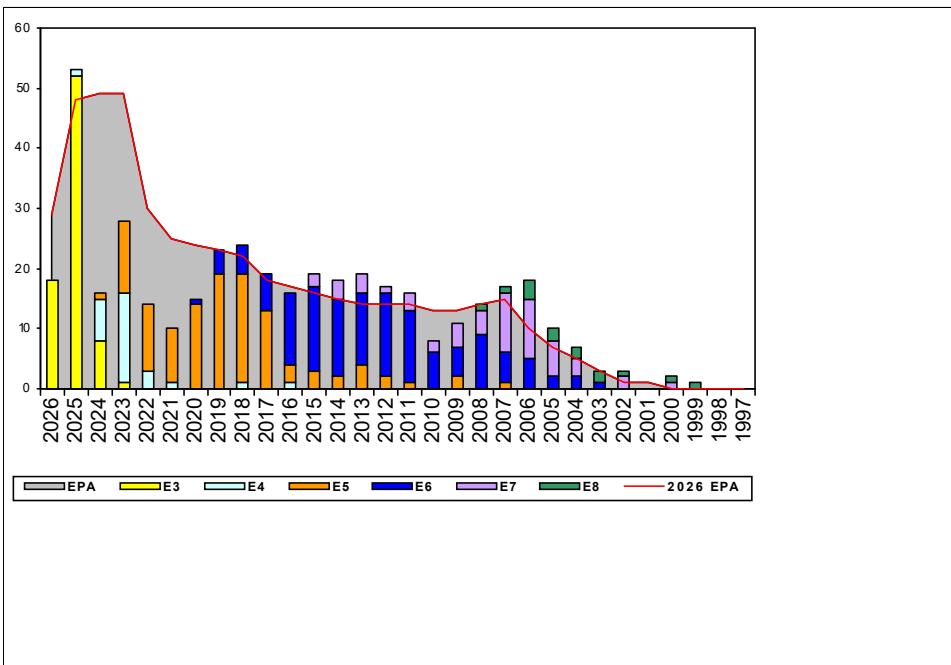


Aviation Structural Mechanic, TAR - J080



Sea Shore Rotation			FS MANNING		
TOUR	SEA	SHORE	PG	SEA	SHORE
E1-3	48	42	E1-3	139.39%	166.67%
E4	48	42	E4	33.33%	4.00%
E5	48	42	E5	97.33%	80.00%
E6	48	42	E6	95.56%	137.04%
E7	48	36	E7	91.89%	117.65%
E8	48	36	E8	77.78%	77.78%
E9	42	36	E9	0.00%	0.00%

		Pay Grade	E1-E3	E4	E5	E6	E7	E8	E9
TIS to PG Years	ALL Navy	TIR	1.8	3.4	8.4	14.2	18.2	21.8	
	AMTAR	TIR	1.8	4.4	8.9	15.1	19.4		
TIG to PG Years	ALL Navy	TIR	1.2	1.8	4.9	6.3	5.6	4.2	
	AMTAR	TIR	1.2	2.8	4.7	6.1	5.2		

Zone Info	ZONE A	ZONE B	ZONE C	ZONE D	ZONE E	ALL ZONES
FY26 Manning:	63%	95%	115%	107%	111%	86%
FYTD RE Rate:	100.0%	83.3%	100.0%	100.0%	75.0%	92.3%
FY27 Manning:	59%	90%	106%	99%	103%	80%

NOTES

UNDERMANNED RATING

Current manning is 86% of FY26 Enlisted Programmed Authorizations.

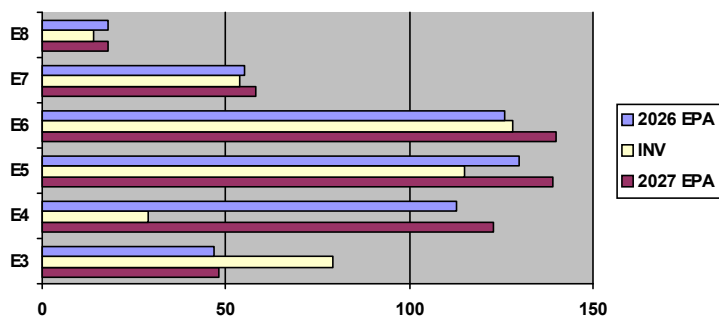
-Convert IN opportunity: Available, Follow MPM 1306-1501/1502.

RC2TAR Quotas Available in C-Way

-Convert OUT opportunity: Case by Case Approval.

For any questions regarding community health, contact your ECM at robert.e.derbyshire.mil@us.navy.mil

EPA by Paygrade vs Inventory



	E1-3	E4	E5	E6	E7	E8	E9	TOTAL
% INV to FY26 EPA	168%	26%	88%	102%	98%	78%	0%	86%
EPA (FY26)	47	113	130	126	55	18	0	489
INVENTORY	79	29	115	128	54	14	0	419
EPA (FY27)	48	123	139	140	58	18	0	526
% INV to FY27 EPA	165%	24%	83%	91%	93%	78%	0%	80%